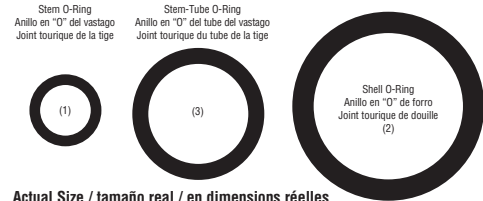
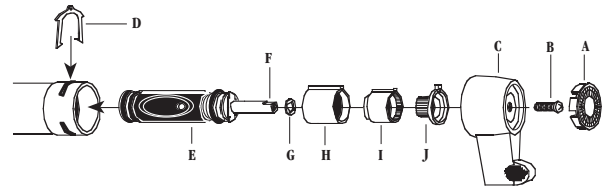
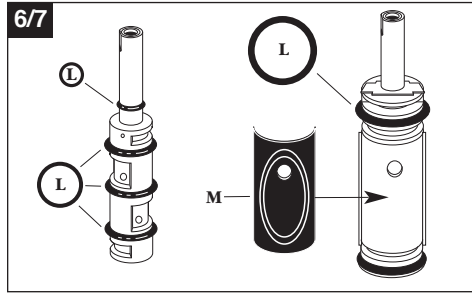
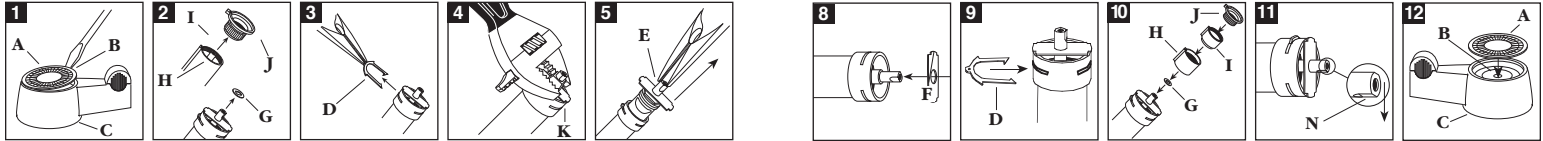




Instructions For
Repair Kit for Moen "Posi-Temp"

Instrucciones para
Estuche de Reparacion para Moen Posi-Temp



Actual Size / tamaño real / en dimensions réelles

Cartridge Removal

Tools Required: Screwdriver, Pliers, Adjustable Wrench

CAUTION: Turn off water supply to faucet. Turn on faucet to drain water from the faucet. If water is not completely shut off and faucet drained, injury or water damage may result.

1. Pry off handle button (A) and remove handle screw (B) and handle (C).
2. Disassemble temperature limit stop (J), key stop (I), stop tube (H) and washer (G). **Remember position of temperature limit stop as it will have to be reassembled in same position.**
3. Use pliers to pull retainer clip (D) from cartridge.
4. Slide white plastic assembly tool (included in kit) over stem and against cartridge body so that it fits over protrusions (K). Use adjustable wrench on the tool to turn the cartridge from side to side to loosen cartridge (E).
5. Use pliers to pull cartridge (E) from faucet body.
6. Push stem assembly out of body of cartridge and remove old "O" rings. Be careful not to damage body.

Installing New Cartridge

7. Install new "O" rings (L). Coat **outside** only of "O" ring with a light coating of silicon grease. Remove old grommets (M). Coat both sides of new grommets with silicone grease and install.

CAUTION: Cartridge inlet ports must be properly aligned when reassembling faucet.

8. Make sure there is no debris in the faucet body. Make sure that notch (F) on stem is facing down. Push cartridge into faucet body until protrusions are into valve recess and are resting against it.
9. Reassemble retainer clip.

CAUTION: Do not turn on water supply unless clip is properly installed. Failure to properly install clip may result in injury or water damage.

10. Reassemble washer (G), stop tube (H), key stop (I), and temperature limit stop (J). Be certain that limit stop is replaced in its original position. If it is necessary to adjust temperature limit stop see instructions for "Back to Back" installations.
11. Recheck to make sure that flat (N) on cartridge stem is facing down.
12. Reassemble handle.
13. Turn on water supply to faucet. Turn on faucet to see if it is in the cold position. If it is not in the cold position see instructions for reversing hot and cold.

Installation where faucets are installed "back to back" or where hot and cold water are reversed

When faucets are installed "back to back" the cartridge may have to be installed with the hot and cold ports in reversed position. This is done by turning the complete cartridge 180° (see drawing). The notched flat on the stem must face up. This same procedure is used when a faucet is installed with the hot and cold water supplies reversed.

CAUTION: If the handle is in the off position and the water does not turn off, shut off the water supply to the faucet, disassemble the handle (DO NOT REMOVE THE CARTRIDGE OR RETAINER CLIP) and rotate the stem 180° (see drawing). The notched flat on the stem must face up. This same procedure is used when a faucet is installed with the hot and cold supplies reversed.

Temperature Limit Stop Adjustment

Seasonal changes in the temperature of the cold water supply may make it necessary to readjust the temperature limit to assure that the correct maximum discharge temperature is maintained.

1. Remove cold water from hot water supply line before adjusting temperature limit stop.
2. Adjust temperature limit stop (J) by removing handle assembly. Next remove limit stop from stop key (I) and rotate clockwise until desired hot position is achieved. Replace limit stop.
3. Put handle (C) on to stem and turn to maximum hot position. Test water temperature and readjust limit stop is necessary.
4. Reassemble handle.

